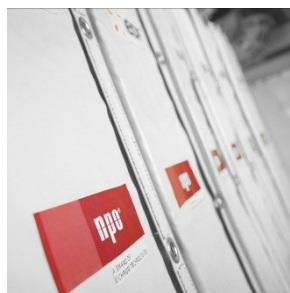


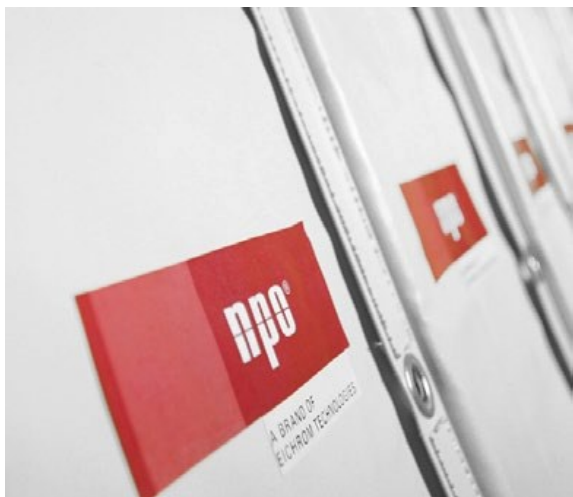
npo[®]

A BRAND OF
EICHROM TECHNOLOGIES



Lead blanket





Eichrom Technologies, is working for more than 40 years in the nuclear industry to protect people and the environment.

NPO, Founded in 1976, we have more than 40 years of experience in radiation protection in the nuclear industry. We are a global provider of biological protection. We offer reliable solutions that benefit from responsive global service and support.

We help nuclear professionals to work quickly and efficiently with ergonomic and innovative products.

Eichrom is a world leader in the field of radiochemistry. Founded in 1990, Eichrom has been at the forefront of commercialization in the fields of environmental radiochemistry, nuclear medicine and geochemistry.

With our R & D laboratory in chemistry and radiochemistry, we regularly develop new products to meet the requirements of professionals in nuclear energy, the environment, universities and medicine.



Lead blanket



Each NPO's lead blanket is layered in continuous lead wool rope, minimizing gaps and increasing attenuation.

NPO's lead blankets are highly flexible and are manufactured in a multitude of sizes, shapes and weights for effective shielding around components.

Specifications:

- Effective area: 800 mm x 400 mm
- External dimensions : 950 mm x 550 mm
- Fire Class: M2
- External covering: PVC laminated reinforced with nylon fibre
- Eyelets: 12 units per blanket (up to 120 kg per eyelets)
- Attenuation : 35% minimum on the cobalt 60

Innovations

Handles

Handles set on the long sides of the blankets allow workers to lift and place blankets with ease. Blankets can now be easily and quickly moved from storage to hooks or racks in the areas they are needed. The larger borders on these blankets make for handles that can easily accommodate a gloved hand.

- Faster and easier handling
- More maneuverability
- Carry a blanket with one hand
- Better leverage for installation

Printing

- Weight of each blanket printed on the front
- Part and lot numbers for quick identification
- Custom printed plant/utility logos
- Print extra details such as what unit the blanket should be in or what application it is for

RFID tags

Located under the label and used in conjunction with a scanner, RFID tags give a unique ID to each blanket and keep track of its movement.

- Quick counting
- Keep track of how many blankets go in and out
- Inventory management



Custom made



Magnetic labeled curved blankets



Custom shape,
grommet spacing
with D-ring loops

Lead wool blankets can be designed and made with nearly any 2D layout imaginable. Add magnets, Velcro, cut-outs, grommets, and cinch straps, and create a blanket truly designed specifically to get the job done.



No borders, custom label, custom shaped



Steam generators

During the sludge lancing process, work is performed using the highly radioactive hand holes, and workers spend a significant amount of time in close proximity to the generator's outer surface. NPO customized a shielding solution to minimize dose during this application.

Lead blanket



Alpha maritex blanket

Available in various sizes, shapes and weights, NPO's alpha maritex coverings can withstand continuous temperatures of 260 degrees Celsius. The blankets are typically used in high temperature applications and have been used as permanent shielding in some facilities.



High temp dry cask lid shield

NPO provides custom designed dry cask canister lid shielding that fits any model including Holtec, TransNuclear, and NAC International.

- Implemented by over 12 sites in the US
- 60 % gamma attenuation (Co-60)
- 260°C continuous service temp max
- 16 kg per piece



Lead wool magnetic shielding tiles

These magnetic tiles allow for quick installation on any carbon steel surface while offering a significant dose reduction. The tiles are easy to use and are moldable to slightly curved



High temperature blankets come in all standard lead blanket sizes

Accessories

Cargo netting

Substitute scaffolding with lattice webbing and integral swivel hooks. These systems are custom manufactured to work with pipes, tanks, or other applications.

Features

- Grommets and hooks can hold 400 lb each
- Webbing strips can hold up to 4000 lb
- Multiple hook locations allow for various size blankets

Benefits

- Save scaffolding space and money by hanging blankets directly on pipes and tanks.
- Configure blankets to exact shape with swivel hooks
- Create large shield walls that are easily hoisted into place
- Minimal storage space required

S-hooks

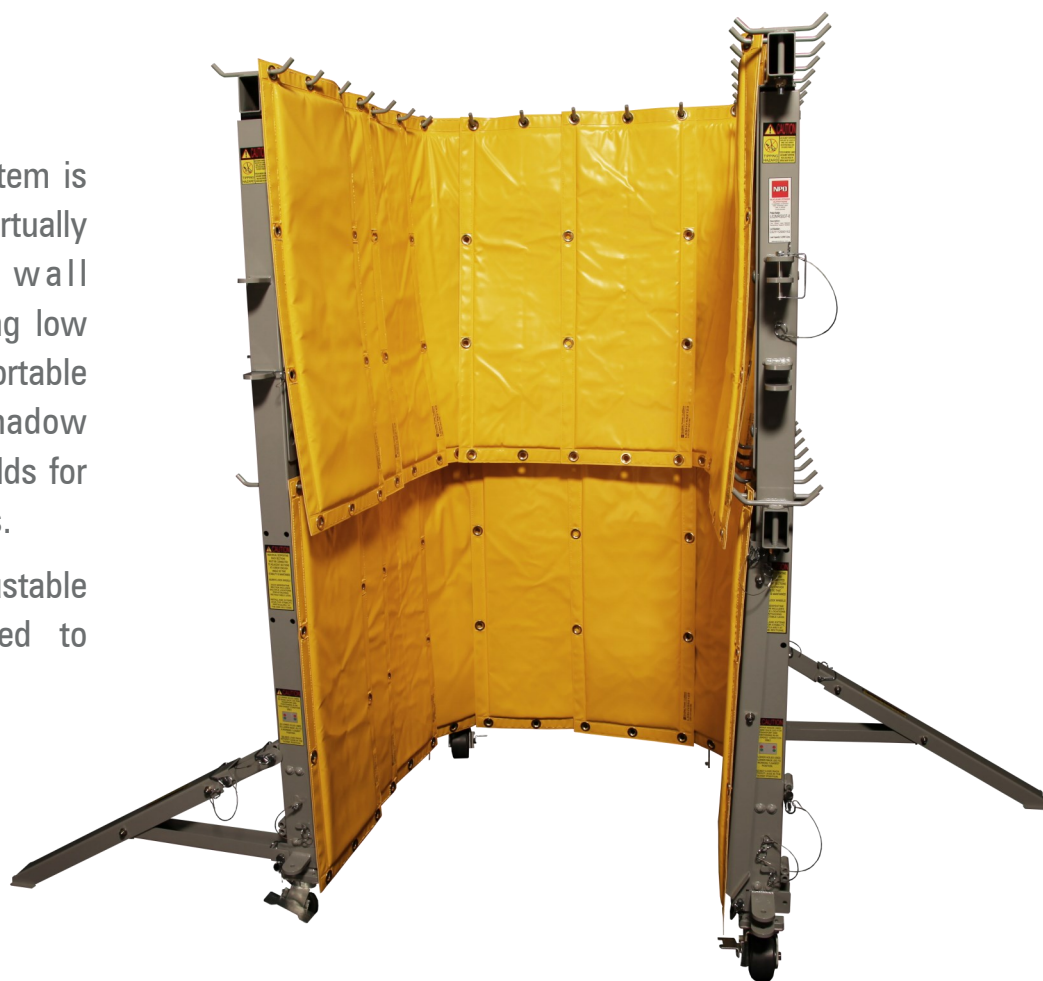
The stainless steel swivel hooks are used in place of scaffolding by hanging off existing structures. S-Hooks can also be connected to 4,000-pound capacity lattice webbing for applications such as upper head shield support.



Accessories

NPO's serpentine system is designed to provide virtually any shielding wall configuration, including low dose waiting areas, portable frisking caves, shadow shield walls, and shields for rad materials transfers.

This sturdy and adjustable system was designed to replace scaffolding,



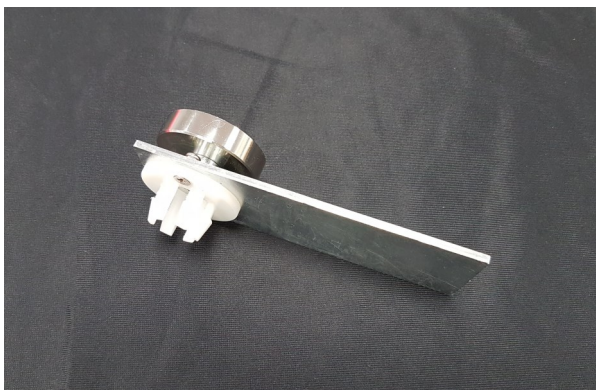
Accessories



Stainless Steel « S » hook



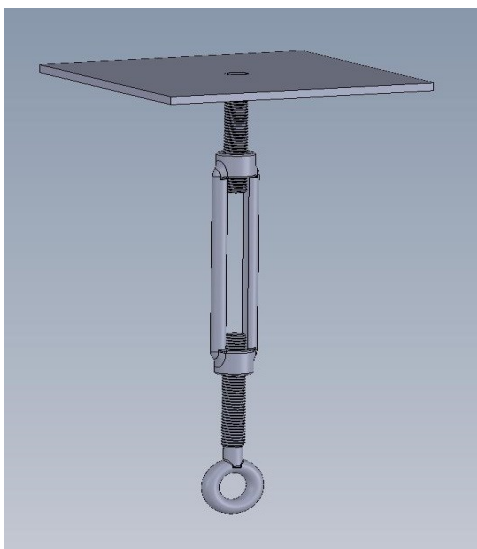
Magnetic hook



Magnetic Clip



Scaffolding Hooks



Duckboard Adapter



A BRAND OF
EICHROM TECHNOLOGIES

Contact Us

NPO EUROPE

119 Rue du Temple De Blossne
35136 Saint Jacques de la Lande
Tél : + 33 (2)99 83 56 40
Email : npoeurope@eichrom.com

www.eichrom.com

